



NORWOOD YOUNG AMERICA PARKS & RECREATION COMMISSION
Tuesday, February 18, 2025 - 5:30pm
City Hall Council Chambers, 310 Elm Street West
AGENDA

- | | |
|----------------------|--|
| Brooke
Allen | 1. Call to Order
A. Pledge of Allegiance |
| Brandon
Stender | 2. Adoption of Agenda |
| Sharilyn
Feltmann | 3. Approve Minutes
A. January 21, 2024, Parks & Recreation Meeting |
| Karla
Hormann | 4. Introductions, Presentations, and Public Comment
(Citizens may address the Parks & Recreation Commission about any non-agenda item of concern. Speakers must state their name and address and limit their remarks to three minutes. The Parks & Recreation Commission will take no official action on these items but may refer the matter to staff for a future report or direct that the matter be scheduled for a future meeting.) |
| Dan
Stender | 5. Business/Updates
A. Disc Golf Course at Prairie Dawn Park
B. Arbor Day 2025 at Friendship Park
C. Dog Park at Friendship Park
D. West Carver Community Pool Project
E. Tennis Courts at Friendship Park |
| Jim
Zellmann | |
| Open Seat | |
| Comm ED
(ad hoc) | 6. Community Education Update |
| | 7. Upcoming Meeting - Next P&R meeting - March 18, 2025, 5:30pm. |
| | 8. Adjournment |

February 20 th	Sr. Advisory Commission Meeting	9:00 AM
February 24 th	City Council Workshop/Meeting	5:00 PM/6:00 PM
March 4 th	Planning Commission Meeting	6:00 PM
March 10 th	Economic Development Authority (EDA)	4:30 PM
March 10 th	City Council Meeting	6:00 PM
March 12 th	NYA Food Distribution	12:00 PM – 1:00 PM
March 19 th	Park and Recreation Commission Meeting	5:30 PM

NORWOOD YOUNG AMERICA PARKS & RECREATION COMMISSION

Tuesday, November 19, 2024- 5:30pm

City Hall Council Chambers, 310 Elm Street West

Minutes

Members present: Dan Stender, Sharilyn Feltmann, Brooke Allen, Karla Hormann, Jim Zellmann, Brandon Stender

Staff present: Community & Economic Dev Director Karen Hallquist

Others: Sue Forster, District 108 Community Ed, Karla Hemmann, Kiera Hemmann

1. Call to Order

The meeting was called to order at 5:32 p.m.

A. Pledge of Allegiance - all those present stood for the Pledge of Allegiance

2. Adoption of Agenda

Motion: BG/DS to adopt the agenda with the addition of A. Safety Net Project with the other Business/Updates as follows. Motion passed 6-0.

3. Approve Minutes

A. November 19, 2024, Parks & Recreation Meeting

Motion: JZ/SF to approve the minutes. Motion passed 6-0.

4. Introductions, Presentations, and Public Comment - none

5. Business/Updates

A. Safety Net Project - Girl Scout Gold Award - Kiera Hemmann

B. NYA Sports Complex Zellmann Field Light Pole Project

Hallquist shared that the project will start this spring weather pending.

C. Disc Golf Course

Hallquist talked with representatives from Disc Golf Association for a 9-hole disc golf course at Prairie Dawn Park. Supplies will be approximately \$5,000 with about \$4,000-5,000 in design. DGA will be sending a proposal. Staff will work on a second bid.

D. Arbor Day 2025

Commissioners discussed the Arbor Day event will be held on Thursday, May 29th at 9am at Friendship Park. Staff will reach out to the Girl Scouts and Boy Scouts for participation. Community Education may be able to partner as well. More details to come.

E. Dog Park at Friendship Park

Staff and the public service department are working on additional fencing plans for the entrance of the dog park. The PSD saved two hydrants from street projects this year to place within the park.

Commissioners agreed to hold off on any other agility or obstacle course equipment at this time.

Commissioners will bring name ideas to the next meeting.

F. 2025 Goals

Goals as presented were agreed upon. Commissioners commented on the need for more consistent Raider Field House hours for walkers.

Motion: BS/DS to approve the 2025 NYA Parks & Recreation Commission Goals. Motion passed 6-0.

6. Community Education Update -

Dist 108 Community Ed Director Forster shared that Community Ed has been busy with the following:

- Spring/Summer brochure will be out soon
- Facility rentals can be booked on the school website
- ECFE on Wheels has received great feedback
- The American Legion and VFW donated \$3,000 each to Music in the Park this summer. Everyone is encouraged to attend. Community Ed is looking for other means of getting the word out.
- There will be another pickleball tournament for Stiftungsfest.

- They applied for a VPL grant to support funding for preschool tuition.

7. **Upcoming Meeting** - Next P&R meeting – 5:30pm, February 18, 2025.

8. Adjournment

Motion: BS/KH to adjourn. Motion passed 6-0.

Submitted by:

Karen Hallquist, Community & Economic Development Director



TO: NYA Parks & Recreation Commission
FROM: Karen Hallquist, Community & Economic Development Director
DATE: February 18, 2025
RE: Business/Updates

A. Disc Golf Course

Staff has been in contact with another disc golf course designer, who is also working on a similar project for the City of Mayer. More information will be presented at the meeting.

B. Arbor Day - May 29, 2025 at Friendship Park

Attached is a suggested tree list for Minnesota landscapes provided by the University of Minnesota Extension office. Trees for the Arbor Day event will be chosen from this list. The City's engineering firm, Bolton & Menk, will participate in the event along with the Boy Scouts and Girl Scouts.

C. Dog Park at Friendship Park

Staff and the public service department are developing additional fencing plans for the dog park's entrance. German words that could be used for the dog park name:

Companion	Begleiter
Friendship	Freundschaft
Together	Zusammen
Play	Spielen

Other ideas include a "Name the Dog Park" contest. Ideas could be submitted through a SurveyMonkey format, and the winner could be at the dog park to help celebrate a ribbon cutting.

D. West Carver Community Pool Project

The concept design changes for the pool project are attached. These updates are a direct response to the Minnesota Department of Health inspection report and ensure compliance with all current safety and ADA regulations.

The proposed enhancements will create a safer, more accessible, user-friendly facility for all residents and visitors. Key upgrades include:

- A reconfigured “safe” layout and traffic flow that meets inspection requirements
- New ADA-compliant entrance features to ensure accessibility for all patrons
- Epoxy non-skid flooring to improve safety and reduce slip hazards
- Installation of modern, touchless fixtures—including sinks, showers, toilets, soap dispensers, and hand/hair dryers—to enhance hygiene and efficiency

Replacement of the doors and updated entrance to meet city code façade requirements will also be addressed.

E. Tennis Courts at Friendship Park

The replacement of the tennis courts (approximately \$95,000) has been included in the City’s CIP for the year 2026; however, area civic organizations have recently approached the city looking for a large park project to financially support. Because of this offer, the staff is recommending organizing this project for 2025.

Attached is an aerial view of the tennis courts. The entire area is 14,400 sf with two entrances on the southwest and northeast sides. There are 2 tennis courts, 2 pickleball courts painted within the tennis courts (and using the same nets), and 2 basketball hoops with no striping. Also included are specs for pickleball courts.

Commissioners are to discuss the following:

- Should the court include a mix of one tennis court and multiple pickleball courts?
- There are 2 full basketball courts at South Park, 1 half court at Prairie Dawn, and 2 shooting hoops at Friendship Park within the tennis courts. It is important to keep basketball as a part of this project. Should there be a half-court stripe instead of only a couple of hoops?
- Are there other amenities that should be considered?

As a reminder to the commission, the Friendship Park Trail will be completely redone in 2025 with an extension of the trail to the tennis courts.

Pending commission support, staff will pursue two quotes for the project and contact the civic organizations of the status.



Select trees and shrubs for Minnesota landscapes

Trees contribute a great deal to any landscape: shade, structure, a canopy “ceiling”, protection and wildlife habitat. The following list of recommendations does not cover all the trees available for Minnesota landscapes, but these trees serve as good options for yards, gardens, and communities.

The [UMN Forest Resources trees, shrubs and vines database](#) lists and describes different types of trees, shrubs and vines.

Deciduous trees

Accent trees



Heritage **river birch** (*Betula nigra* ‘Cully’)

- Exfoliating bark that ranges from tan to almost white.
- Resistant to **bronze birch borer**.
- Tolerant of wet, poorly drained soils.
- Requires soil pH 7.2 or less.
- **Height: 45–50 ft. Spread: 30–35 ft. Full sun. Zones 4–8.**



Dakota Pinnacle® Asian white birch (*Betula platyphylla* ‘Fargo’)

Developed by NDSU, this is a medium to small graceful white birch.

- Striking narrowly pyramidal form.
- It will succumb to **bronze birch borer**, so keep it well-watered, plant in a garden bed to avoid compacted soil, and mulch the root zone. It’s worth the extra work.
- **Height: 35 ft. Spread: 12 ft. Full sun. Hardy in Zones 3a – 7.**



Shagbark hickory (*Carya ovata*)

- Highly recommended for zone 4 and especially southeastern Minnesota.
- A Minnesota native, this plant features large, flat curving plates of peeling bark (hence its common name) and produces edible nuts (excellent wildlife value).
- Hard to get large sized trees in nurseries. Check with a local native plant nursery.
- **Height: 80 ft. Spread: 50 ft. Full sun. Zones 4-9.**

Flowering trees



Serviceberry, Juneberry, Saskatoon berry, Shadblow (*Amelanchier speciosa*)

- Not planted enough, this small tree features white spring flowers, purple to black edible fruit (rivals blueberry), red fall foliage and soft gray bark.
- **Height: 25 ft. Spread: 25 ft.**
- Developed for fruit production, the shrub form 'Regent' (*Amelanchier alnifolia* 'Regent') is an excellent addition to a home landscape.
 - **Height: 6 ft. Spread: 6 ft.**
 - Tolerant of various soils.
 - Full sun to partial shade. **Zones 2-7.**



Northern catalpa (*Catalpa speciosa*)



Best performing urban tree from Arbor Day planting records dating back to 1995.

- Large form with heart-shaped leaves and bunches of fragrant, white orchid-like flowers that form long green pods.
- Tolerant of a wide variety of soil types.
- **Height: 60 ft. Spread: 40 ft. Full sun. Hardy in zones 4-6.**

Shade trees



First Editions® Matador® maple (*Acer x freemani* 'Bailston



- Hybrid of silver and **red maples**. Adaptable.
- Symmetrical upright form, deep red fall color that comes later and stays longer.
- A better-built cousin to Autumn Blaze® maple.
- **Height: 40-45 ft. Spread: 20-40 ft. Full sun. Zones 4-7.**



Silver Queen silver maple (*Acer saccharinum* 'Silver Queen')

- Like all maples, shallow roots are still an issue.
- A cultivar of our native, this silver maple is very well built, site tolerant and about $\frac{2}{3}$ the size of the species at maturity.
- Great shade tree if given plenty of room. Do not plant it on a boulevard.
- **Height: 50 ft. Spread: 40 ft. Full sun. Zones 3-7.**



Hackberry (*Celtis occidentalis*)

- This



deciduous tree does well in just about any type of soil as long as it is not a swamp.

- Foliage turns gold in fall and birds love the black berries.
- Corky, knobby bark is interesting year-round. A good urban tree and wildlife plant.
- **Height: 60 ft. Spread: 60 ft. Full sun. Reliably hardy in zones 2-9**

Northern Acclaim® thornless honeylocust
(*Gleditsia triacanthos* var. *inermis* 'Harve')



An NDSU introduction, this seedless variety from the legume family is a tough urban tree featuring bright green foliage that changes to gold in the fall.

- Pyramidal form. Provides filtered shade. One of the best shade trees to grow if you also value a healthy lawn beneath it.
- **Height: 50 ft. Spread: 35 ft. Full sun. Zones 3b-6.**



True North™ Kentucky Coffeetree (*Gymnocladus dioica* 'UMNSynergy'):

A University of Minnesota introduction that provides yellow fall color.

- A male selection, so no messy pods.
- A member of the Fabaceae (legume) botanical family.
- Disease resistant and tolerant of heat, cold, wind and dry soils with high pH.
- Good tolerance to both deicing salt spray and run off.
- **Height: 50-70 ft. Spread: 25-35 ft. Full sun. Hardy to zones 4-9.**



Summertime amur maackia (*Maackia amurensis* 'Summertime')

A University of Minnesota introduction and one of our best performing, brownfield site trees.

- Typical of the members of the legume family, it is tough as nails, can live in very poor (but well-drained) soil and still look good.
- **Height: 15-20 ft. Spread: 12-15 ft. Full sun. Zones 3-8.**

Cottonwood (*Populus deltoides*)

- Cottonwoods are very large, dramatic trees with shiny, delta-shaped leaves and deeply ridged bark.
- Female trees produce sticky seed buds and masses of downy white "cotton" that clings to window screens, gathers in gutters and seems to be everywhere.



- The male Cottonwood is an under-used, large quality tree that does not have the cottony seed. It is found everywhere in Minnesota and a favorite for nesting eagles.
- **Height: 100 ft. Spread: 75 ft. Full sun. Hardy in zones 3-9.**
- Buy from a reputable nursery source.



Majestic Skies™ Northern pin oak (*Quercus elipsoidalis* 'Bailskies')

- Red spring foliage changes to dark green in summer and a deep red in fall.
- Symmetrical form makes this plant stand out in any landscape.
- A very well-built tree that requires minimal developmental pruning.
- **Height: 60 ft. Spread: 45 ft. Full sun. Zones 3-8.**



Dutch elm disease-resistant elms

- Asiatic cultivars:
 - Accolade® (*Ulmus* 'Morton') **Height: 50 ft. Spread: 40 ft.**
 - Triumph™ (*Ulmus* 'Morton Glossy') **Height: 60 ft. Spread: 40 ft.**
 - Both have very good form and growth rate, are easy to maintain and have the best disease resistance of **DED-resistant elms**.
- Other species and varieties suitable for Zone 3 (and 4) with pretty good resistance:
 - 'Prairie Expedition' (*Ulmus americana* 'Lewis and Clark') **Height: 60 ft. Spread: 40 ft. Full sun.**
 - 'Discovery' (*Ulmus davidiana* var. *japonica* 'Discovery') **Height: 30 ft. Spread: 40 ft. Full sun.**

To help minimize **Dutch elm disease**:

- Elm varieties should never represent more than 5% of the total tree population.
- Elm trees should never be planted closer than 60 feet from each other.

Conifers



Concolor fir, white fir (*Abies concolor*)

Minnesotans fell in love with the Colorado blue spruce, then it came down with needlecast disease.

- The Concolor fir is a great substitute for blue spruce, without having to worry about managing a stubborn fungal disease.
- Soft, fragrant and blue-ish foliage. Pinkish-tan upright cones.
- **Height: 50 ft. Spread: 20 ft. Full sun. Zones 3-7.**



American larch or tamarack (*Larix laricina*)

- A



deciduous conifer, larch have clusters of short bright green needles that turn golden and drop off in autumn.

- Grown in full sun, this under-utilized tree performs well in wet to normal (mesic) soils.
- Tolerant of deicing salt spray.
- **Height: 60 ft. Spread: 30 ft. Full sun. Hardy in zones 2-5.**



White pine (*Pinus strobus*)

The white pine is a fixture in northern boreal forests.

- Fine



'Patton's Silver Splendor'

feathery needles, irregular dramatic form especially when mature, and large sticky cones.

- The white pine attracts many kinds of wildlife and should be planted with plenty of space to stretch out its branches.
- Prefers acidic soil that is moist and well-drained, but moderately tolerant of soils with a slightly higher pH.
- If **white pine blister rust** is a problem in your landscape area, choose the disease-resistant variety 'Patton's Silver Splendor' (*Pinus strobus* 'Patton's Silver Splendor').
- **Height: 80 ft. Spread: 40 ft. Full sun to light shade. Zones 3-7.**

Authors: Julie Weisenhorn, Extension horticulture educator, and Gary Johnson, Extension urban forestry specialist

Reviewed in 2023

©2025 Regents of the University of Minnesota. All rights reserved. The University of Minnesota is an equal opportunity educator and employer.

VOS CONSTRUCTION
 18069 371st AVENUE
 GREEN ISLE, MN 55338
 PH: 952.226.7011
 FAX: 952.228.3551
 WWW.VOSCONSTRUCTION.COM

18069 371st AVE
 GREEN ISLE, MN 55338
 PH: 952.226.7011
 FAX: 952.228.3551
 WWW.VOSCONSTRUCTION.COM

REVISIONS DATE

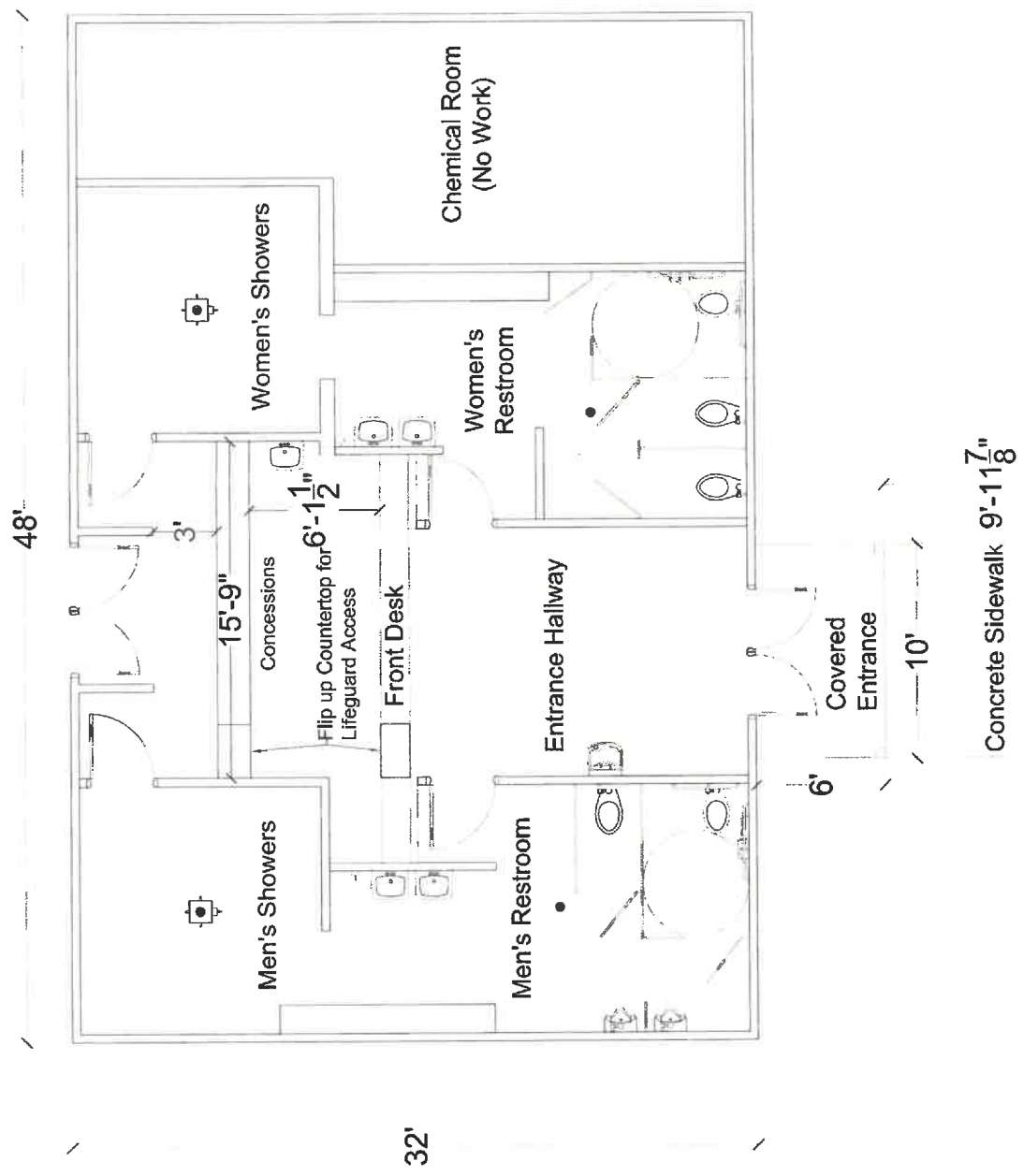
PROJECT
**Norwood Pool
 Remodel & Facade
 Improvements**

DRAWING
**Proposed
 Floor Plan Option #3**

DRAWN BY: **Tristan Weber**
 DATE: **12/18/2024**

NOTE: THESE DRAWINGS ARE THE PROPERTY OF
 VOS CONSTRUCTION, INC. THEY MAY NOT BE
 USED, COPIED OR DUPLICATED WITHOUT PRIOR
 WRITTEN CONSENT.

A1.2



Concrete Sidewalk 9'-11⁷/₈"

Friendship Park—Tennis Courts

~14,400 square feet (120x120')

~ Two (2) tennis courts with nets

~ Two (2) pickleball courts using tennis nets

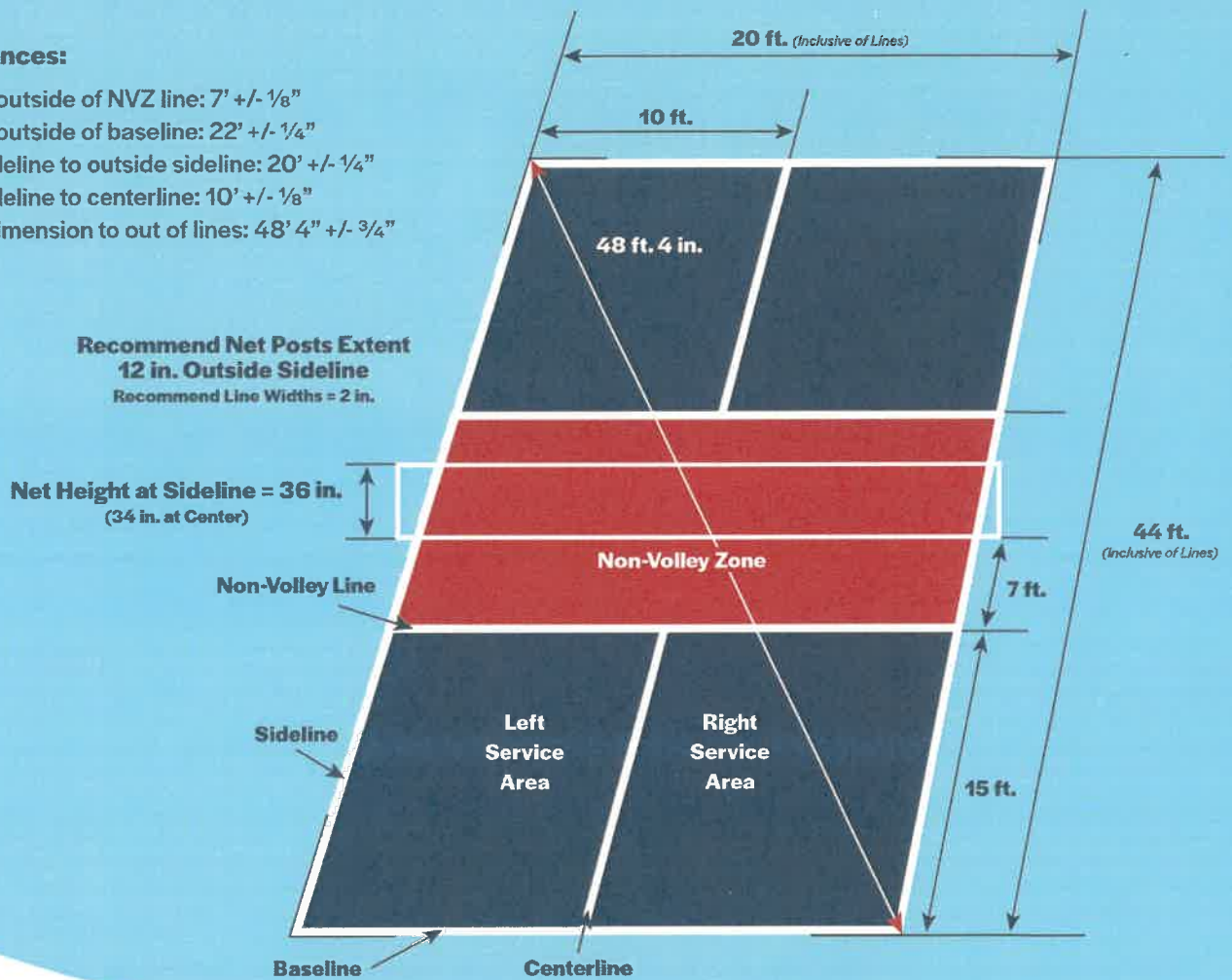
~ Two (2) basketball hoops



PICKLEBALL COURT CONSTRUCTION

Line Tolerances:

- Net line to outside of NVZ line: 7' +/- 1/8"
- Net line to outside of baseline: 22' +/- 1/4"
- Outside sideline to outside sideline: 20' +/- 1/4"
- Outside sideline to centerline: 10' +/- 1/8"
- Diagonal dimension to out of lines: 48' 4" +/- 3/4"



You play the best sport. Now build the best court.

Info at USAPickleball.org/courts

One of the keys to taking your pickleball game to the next level is having a convenient place to play. Whether you're setting up for serious competition, casual games with friends, or a temporary surface for an event, knowing the basics can help you get the most enjoyment out of your court. These guidelines will get you started on building the court that's perfect for your specific needs.

COURT LAYOUT

Baselines: sit parallel to the net at the end of the court.

Sidelines: running the length of the court.

Non-volley zone (NVZ): the area on either side of the net bound in by a line parallel to and 7 feet from the net and two sidelines.

Centerline: extends down the center from the baselines to the NVZ, dividing the court.

Service area: the area beyond the NVZ on either side of the centerline, including the centerline, sideline, and baseline.

SURFACE

Any hard surface (i.e. concrete or asphalt) will suffice for outdoor gameplay, so long as it's free of debris. Grass will not allow the ball to bounce, but driveways or cul-du-sacs can work fine with enough space. Ideally, the surface area should be about 30 feet by 60 feet. For more professional and permanent outdoor court surfacing, there are sport surfacing systems and services available.

NETTING

The net can be made out of any mesh material that will not allow a ball to pass through. It should be at least 21 feet 9 inches long, stretching from post to post; from the bottom edge to the top, it should be at least 30 inches wide. The posts should be 22 feet apart, and no more than 3 inches in diameter. Once the net is suspended from the posts across the center of the court, it should be 36 inches tall at the sidelines, and 34 inches tall in the center. The top edge of the net should have a cord or cable and it should be covered with a 2-inch tape.

LINES

Lines can be made with chalk, tape, paint, or even crayons, but generally tape is the best option for DIY.

INDOOR

The lines, netting, and space requirements for indoor pickleball play are the same as outdoor, but different lighting, fencing, and surfacing options are available, and should be considered. Indoor play allows for fluorescent lighting options that cannot function outside like HID and LED lights would. Indoor play also allows for different flooring options that are not feasible outdoors, like hardwood or rubberized surfaces. Fencing considerations can also vary more with indoor courts, as the surrounding environment does not pose as much a risk as it may outdoors.



USA PICKLEBALL PORTABLE NET SYSTEM

The USA Pickleball Portable Net System (aka the USAPA Portable Net System) is the only net system distributed and used by the official USA Pickleball. It fully complies with all tournament guidelines and is made with sturdy materials that will stand up to long-term play. It can be set up within about 5 minutes using the numbered oval tubing and simple instructions.

Get yours at USAPickleball.org/net

OFFICIAL PARTNERS

SportMaster
SPORT SURFACES

sportmaster.net



isicorp.com



acoustiblok.com